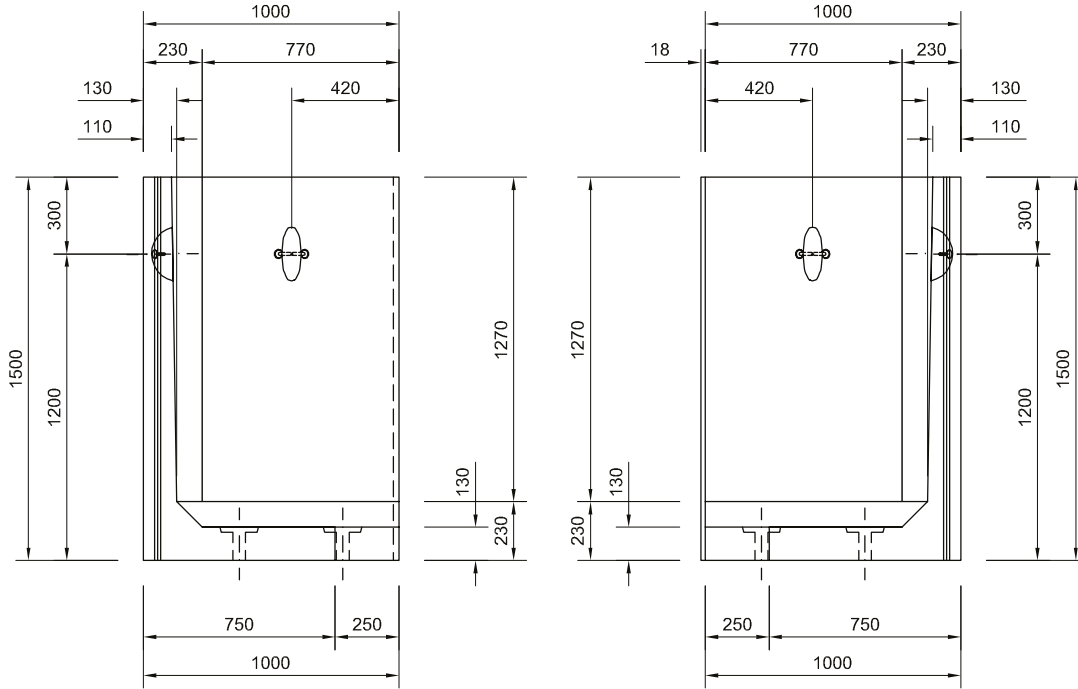


1.50m Retaining Wall

CORNER UNIT. Drawing number: 60

Precast Products

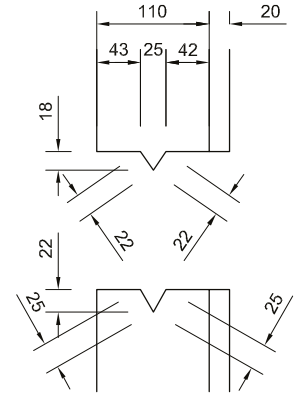
Note: Do not scale from this drawing. If in doubt, please ask for confirmation of any dimension.



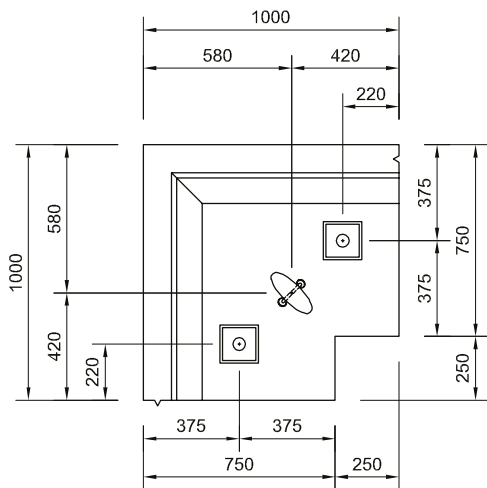
View A - A

View B - B

Height: 1500mm
 Width: 1000mm
 Depth: 1000mm
 Weight: 1.102t
 Embedment: 150mm



Joint Detail




Plan

View A - A

← View B - B

NOTES:

CONCRETE GRADE - 50/60
 COVER TO REINFORCEMENT - 45mm Nominal (Minimum 40mm)

A	Joint detail amended slightly.	DC	17/12/12
rev	amendment	by	date
 Birchwood Way, Cotes Park Industrial Estate Alfreton, Derbyshire, DE55 4NH Tel 01773 602432 Fax 01773 603134 ©			
job Retaining Wall			
title Retaining Wall - 1500mm High Corner Unit Volume 0.441 cu.m. Weight 1.102 tonnes.			
date	02/12/2012	job no	HBP-RW
scale	1:20	drawn	D. Chamberlain
checked	-	drg no	60
		rev	A

For further information please call or email our dedicated sales team.

→ **01773 600 211**

retainingwalls@forterra.co.uk



All content copyright © 2015 Forterra

1.50m Retaining Wall

ANCILLARY ITEMS

Precast Products

Note: Do not scale from this drawing. If in doubt, please ask for confirmation of any dimension.

Loose items schedule: per 1.50m unit

No.	Item
2	M16 (Grade 8.8) Galv Althread x 340lg
2	M16 Galv Nuts
2	100 x 100 x 8thk Galv Plate washer (Ref: PW4)

Grouted in using C32/40 non-shrink grout

All loose items available direct from Forterra.
Please enquire for further details.

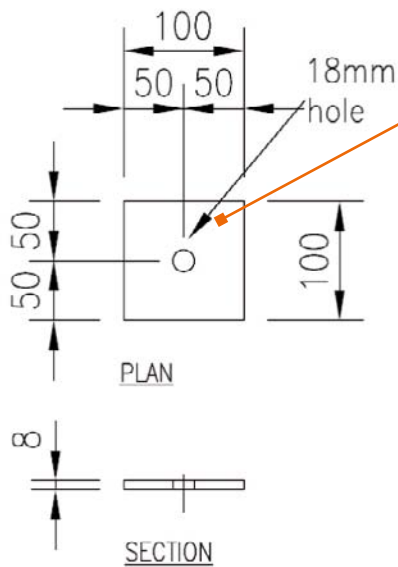
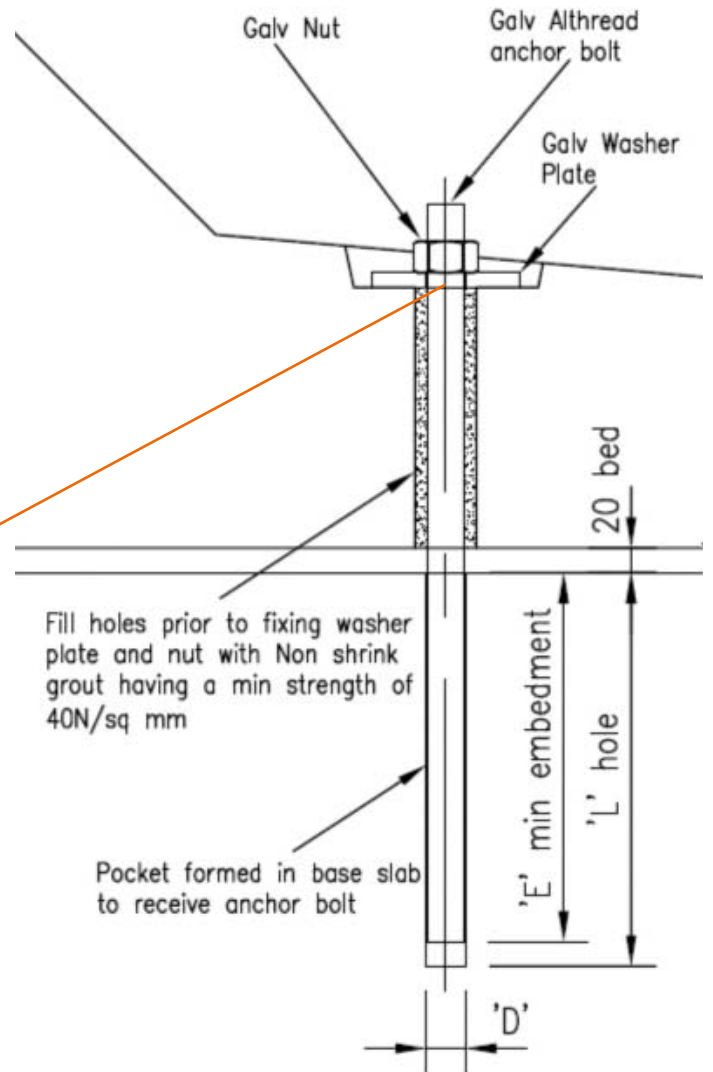


Plate Washer PW4



Anchor Bolt Detail

For further information please call
or email our dedicated sales team.

→ **01773 600 211**

retainingwalls@forterra.co.uk

