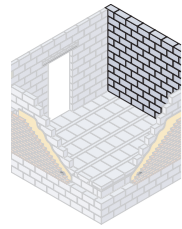


Separating walls

Party Wall | Shield | Hi-Strength 7 | Hi-Strength 10

Thermalite blocks have been independently tested and proven for use in the construction of sound insulating walls between dwellings.



Applications

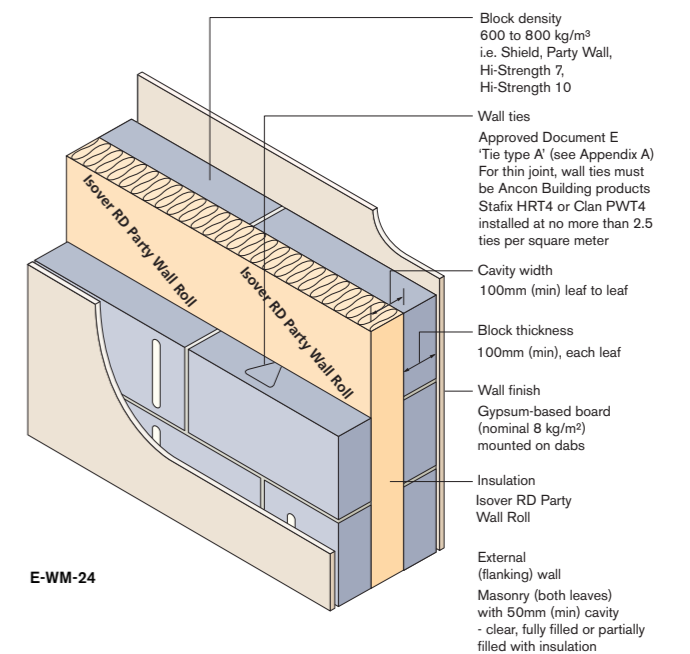
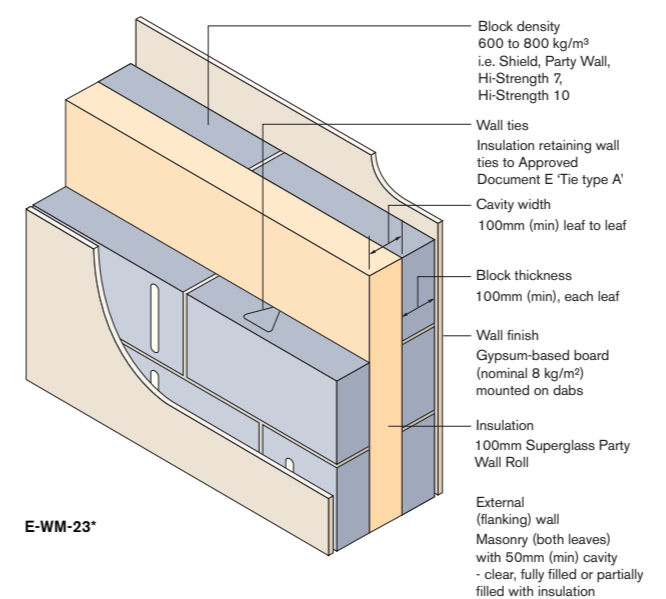
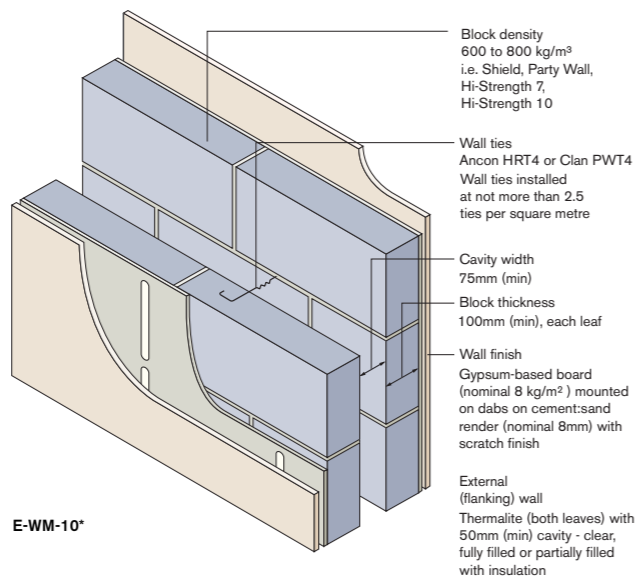
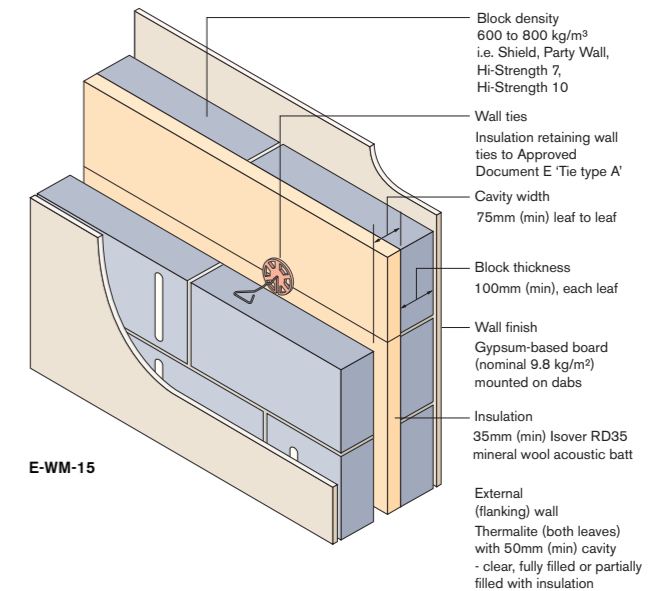
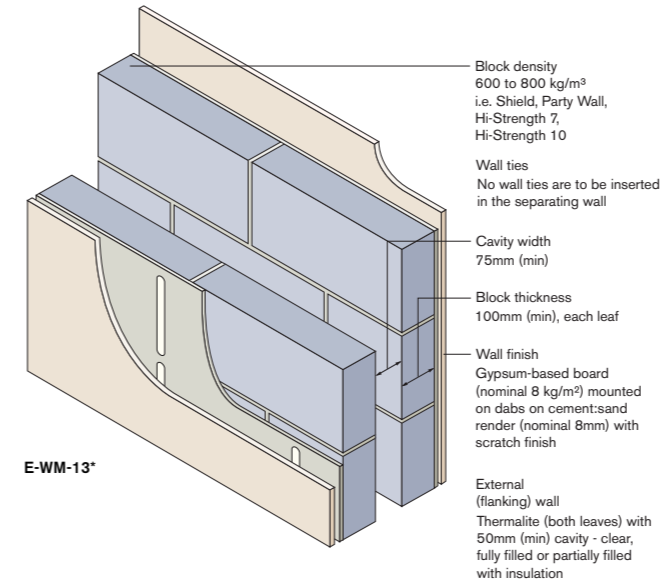
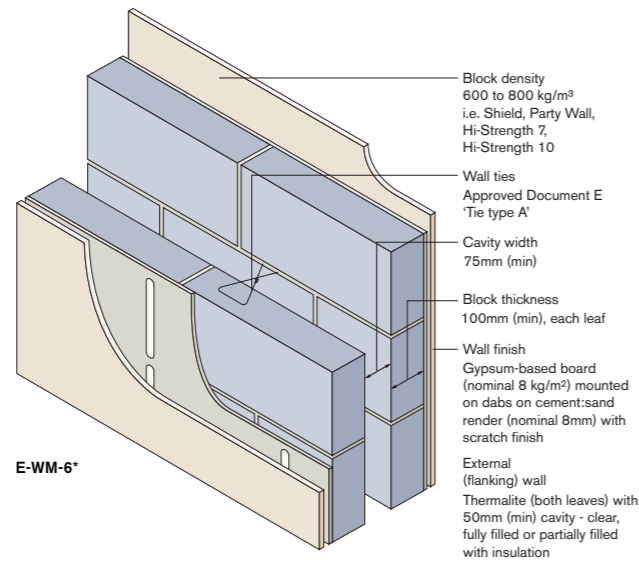
Thermalite Party Wall, Shield, Hi-Strength 7 and Hi-Strength 10 blocks can be used in all types of sound insulating separating walls between dwellings.

Sound insulation

Designers and specifiers should ensure that all separating wall details meet the sound insulation requirements of the Building Regulations, and also that approval is obtained prior to commencing construction.

Overview of Thermalite Robust Detail separating walls

*Option - cavities can be fully filled with mineral wool with maximum density of 40kg/m³



Further advice

If advice is required on meeting the requirements of Approved Document E with Thermalite blocks, please contact Forterra's Product Services department.

For further information on sound insulation performance, see pages 50-55.

Full specifications of Robust Details can be found in the Robust Details Handbook or at www.robustdetails.com