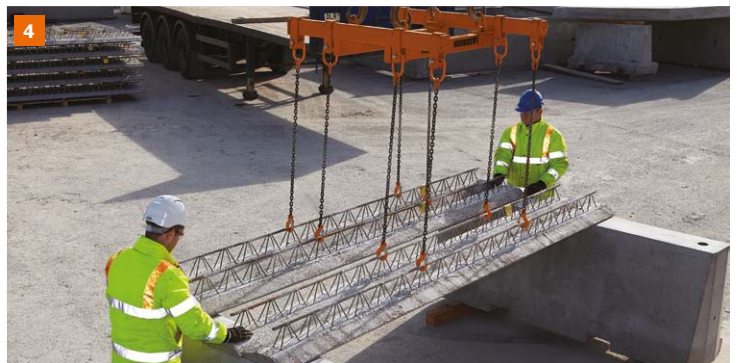
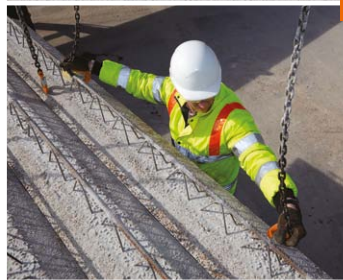
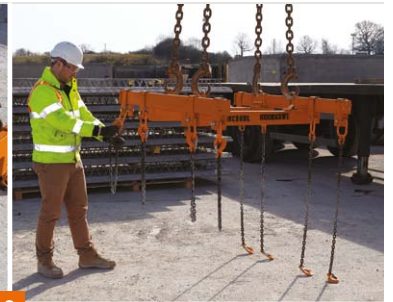


Bridge Deck QuickLift System

Maximising your efficiency on site



Precast Products



We understand that you are looking for the most efficient fixing solution for your project.

The hire of our fully certified QuickLift frame, available in 2 sizes (4 or 8 units lift capacity) minimises installation time.

Chains provided can be set at one or a range of heights to aid installation.

QuickLift frame available in 4 or 8 unit capacity.



The Forterra QuickLift System has been developed to ensure handling times are minimised, providing you with increased output rates of up to 20% against other alternative methods.

1 Omnia Bridge Deck planks are generally delivered on articulated vehicles, palletised in batches of 24 planks (6 deep x 4 wide) and will be delivered in a previously agreed sequence and time/date.

The Omnia Bridge Deck system can be lifted off the wagon using a traditional forklift truck with pallets being placed adjacent to the area to be fixed.

2 The QuickLift frame should be attached to the crane. If the 8-unit frame is to be used, we would suggest two pallets are offloaded next to each other, further minimising lifting times. The chain attachments should be released and connected to the Omnia lattice with the hooks positioned under the diagonal section of steel.

3 The precast panels should be lifted in sets of 4, 1200mm wide approximately (8 planks will be 2400mm wide approximately).

4 When placing the units they will need to be butted together to close any gaps, minimising the risk of grout loss. It is recommended that a method of setting adjacent 'sets' is adopted so that each set is placed at 1200mm dimensions. This will keep the layout of the planks close to that on the drawing, the amount of gaps to a minimum and reduce the risk of any cutting or make-ups due to creep.

For further information please call or email our dedicated sales team.

→ 01773 600 211 bridgedeck@forterra.co.uk