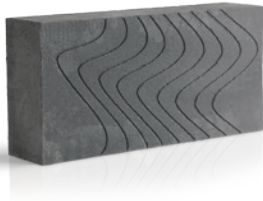


**THERMALITE**

a Forterra brand

**Technical Datasheet****Thermalite Floorblock**

# Floorblock

## Beam & Block Floors

**KEY DATA****Strength**4.0N/mm<sup>2</sup>**Thermal conductivity**

0.16W/m.K

**Density**660Kg/m<sup>3</sup>

Floorblock is an efficient method of providing insulated floors. It is light in weight and is designed for use with all proprietary T-beams and can improve the thermal performance of the floor.

**Specifications**

Floorblock

<b>Face Dimensions (mm)</b>	440 x 215	440 x 350 <sup>†</sup>	540 x 440*
<b>Block Thickness (mm)</b>	100	100	100
<b>Block Weight<sup>†</sup> (kg)</b>	6.5	10.5	16.2

**Note:** After the Floorblocks have been positioned, before any traffic or loading is allowed and before any floor finish is commenced, the floor must be grouted with a 1:4 cement/sharp sand composition.

**Properties**Mean compressive strength not less than 4.0N/mm<sup>2</sup>Design thermal conductivity ( $\lambda$ ) 0.16W/m.KDry thermal conductivity value: ( $\lambda_{10,dry, unit}$ ) 0.14W/m.KSpecified gross dry density 660kg/m<sup>3</sup>

<sup>1</sup> Weights quoted are based on 3% equilibrium moisture content. For typical as-received weights the above figures should be increased by a further 20%. This is, however, dependent on climatic and storage conditions.

<sup>†</sup> Manufactured to special order only.

\* Blocks can be laid to correspond with 540mm beam spacing (660Kg/m<sup>3</sup> density only).

**Forterra**

222 Peterborough Road, Whittlesey, Cambridgeshire PE7 1PD  
Tel: 0330 123 1018 Fax: 01733 206040

Email: [asktechnical@forterra.co.uk](mailto:asktechnical@forterra.co.uk)  
Follow: [@ForterraUK](https://www.instagram.com/ForterraUK)  
Web: [forterra.co.uk](http://forterra.co.uk)